

# BELLA FIGURA

## Rime Pendant

CL52

Collection Name

**CANTERBURY COLLECTION**

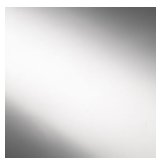
A classic pendant light with an artfully fractured edge and the crackled appearance of frozen ice, which encases the hand-blown glass beneath. Once lit, the refraction of light creates some truly exquisite patterns, which are unique to each pendant.



CL52-LA in clear crackled glass and old english brass chain

### Available Finishes

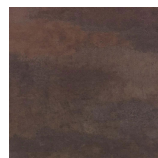
#### Metal Finishes



Polished Nickel



Polished Gold



Old English  
Brass

#### Glass colours



Clear Crackled

#### Installation

Bella Figura do not supply ceiling hooks, screws or bolts for any of our chandeliers. A qualified fitter must assess the ceiling structure and provide the appropriate fixings based on the ceiling construction

### Available Sizes

---

# BELLA FIGURA

## Large

CL52-LA

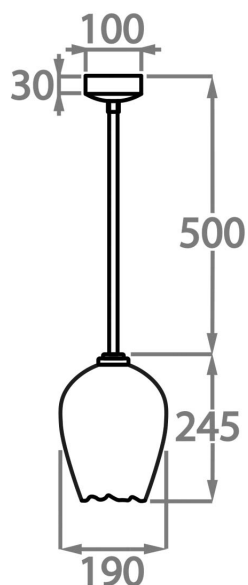
Height: 24.5 cm (9.65")

Diameter: 19 cm (7.48")

1 x 40W E12

Max watt and Lamps: 40W

Net Weight: 3 kg / 7 lb



This pendant is supplied as standard with 50cm (20") of chain. More chain is available on request

\*Please note these pendant's are a unique design and therefore each pendant varies slightly in design and size from one another\*