

BELLA FIGURA

Concertina Pendant

CL114-PEN

Collection Name

MAYFAIR COLLECTION

Our Concertina pendant, is a contemporary piece inspired by brutalist designs from the 1970s and is available in a new distressed bronze finish. This design is made out of a series of random brass v-shaped strips, which are welded together to produce a unique piece of modern ceiling sculpture with a subtle lighting effect. This pendant is finished off with a frosted Lucite bottom diffuser and a central finial

Test Certification

IEC (International Electrotechnical Commission) test

certificates available - will incur a surcharge

UL (Underwriters Laboratories) test certificates

available for the USA - will incur a surcharge

Compatible with



Bathroom



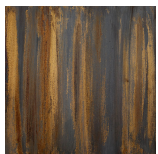
Yacht Club



CL114-PEN in distressed bronze with a Lucite diffuser

Available Finishes

Metal Finishes



Distressed
Bronze

Installation

Bella Figura do not supply ceiling hooks, screws or bolts for any of our chandeliers. A qualified fitter must assess the ceiling structure and provide the appropriate fixings based on the ceiling construction

Available Sizes

BELLA FIGURA

Size One

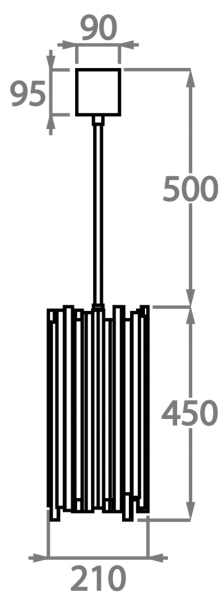
CL114-PEN

Height: 45 cm (17.72")

Diameter: 21 cm (8.27")

3 x 40W

Max watt and Lamps: 40W



The dimensions of the central supporting rod and ceiling rose are not included in the height measurements.
The standard rod and ceiling rose is 50cm (20") high if not otherwise specified by the customer.

*Please note that as the metal is hand-finished, no two distressed finishes will be exactly the same